

# Tank Valves in investment cast

Tank valves are designed to take or feed working media in vessels and are welded in the bottom, cover or the tank wall.

In addition to the tank valves made from solid block SED offers from now on a tank valve made in investment cast. Apart from other features it is a real competitive alternative to the solid block version.

Our capability and experience in investment cast products ensures a reliable casting process and optimized high quality products. In addition all the bodies are checked according to detailed test specifications regarding material structure and density.

The material is according to 1.4435/ 316L ASME BPE with mill certificate EN 10204-3.1 for traceability.

SED's tank valves are designed to take or feed working media almost dead leg free. The tank side of the valve body is designed with minimized dead leg, optimized drainability and ensures a good mixability of the tank content.

The application can be in pharmacy, biotech, cosmetics or food & beverage industries.

## Features

- Competitive product offering
- Compact design, fully drainable
- good mixability of the media
- Low weight
- Low energy product in terms of heat consumption in sterilization processes and material consumption for the product itself
- Available with manual and pneumatic actuation
- Tube end connection butt weld ends and others like clamps, flanges and unions on request
- Surface mechanically polished from 0,8  $\mu\text{m}$  down to 0,4 Ra  $\mu\text{m}$  and e-polished

## Available butt weld tube end standards:

ASTM 269 / ASME BPE                      Code 45  
 SMS 3008    Code 49

## Available actuators for assembly\*:

Diaphragm Size	Control function	
	Pneumatically operated	Manually operated
MA 25 - 50	395, 495, 407	905, 995, 997

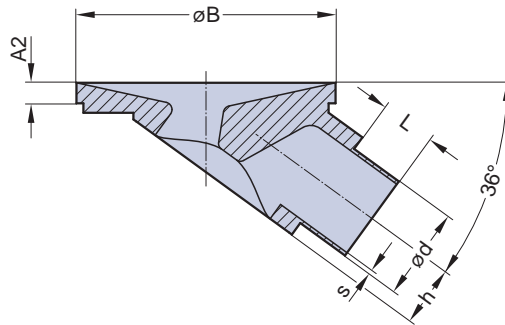
\*\*For detailed information please see catalogue  
 "Valves for Aseptic Applications"



Welded sampling unit on request

# Tank Valves in investment cast

Dimensions of tank valves bodies:



## Butt weld Tube Ends acc. ASTM 269 / ASME BPE, Code 45

DN	MA	ød	s	L	h	øB	A2
25	25	25,4	1,65	25	14,7	97	8
40	40	38,1	1,65	25	20,5	134	12
50	50	50,8	1,65	25	26,6	140	12

## Butt weld Tube Ends acc. SMS 3008, Code 49

DN	MA	ød	s	L	h	øB	A2
25	25	25	1,2	25	14,7	97	8
40	40	38	1,2	25	20,5	134	12
50	50	51	1,2	25	26,6	140	12

TD14 0069 Rev. a, Subject to alteration