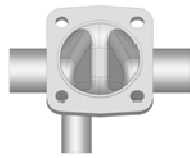
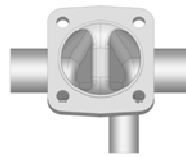


SA1.V



SA2.V



<p>SA1.1.V</p>	<p>SA2.1.V</p>
<p>SA1.2.V</p>	<p>SA2.2.V</p>
<p>SA1.1.H</p>	<p>SA2.1.H</p>
<p>SA1.2.H</p>	<p>SA2.2.H</p>

Sterile Access Configuration: Main Valve Size _____ Tube or Valve Outlet Size _____

Fabrication Figure Number: _____